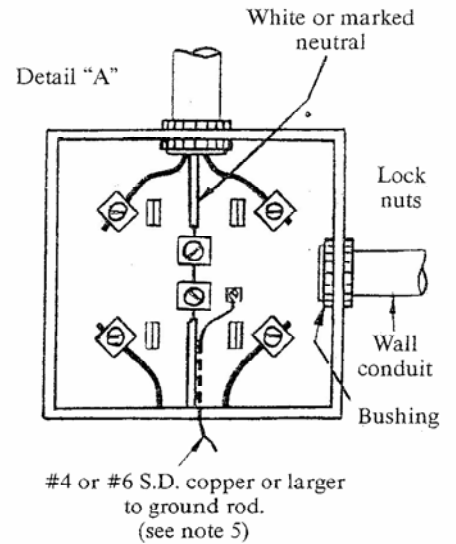
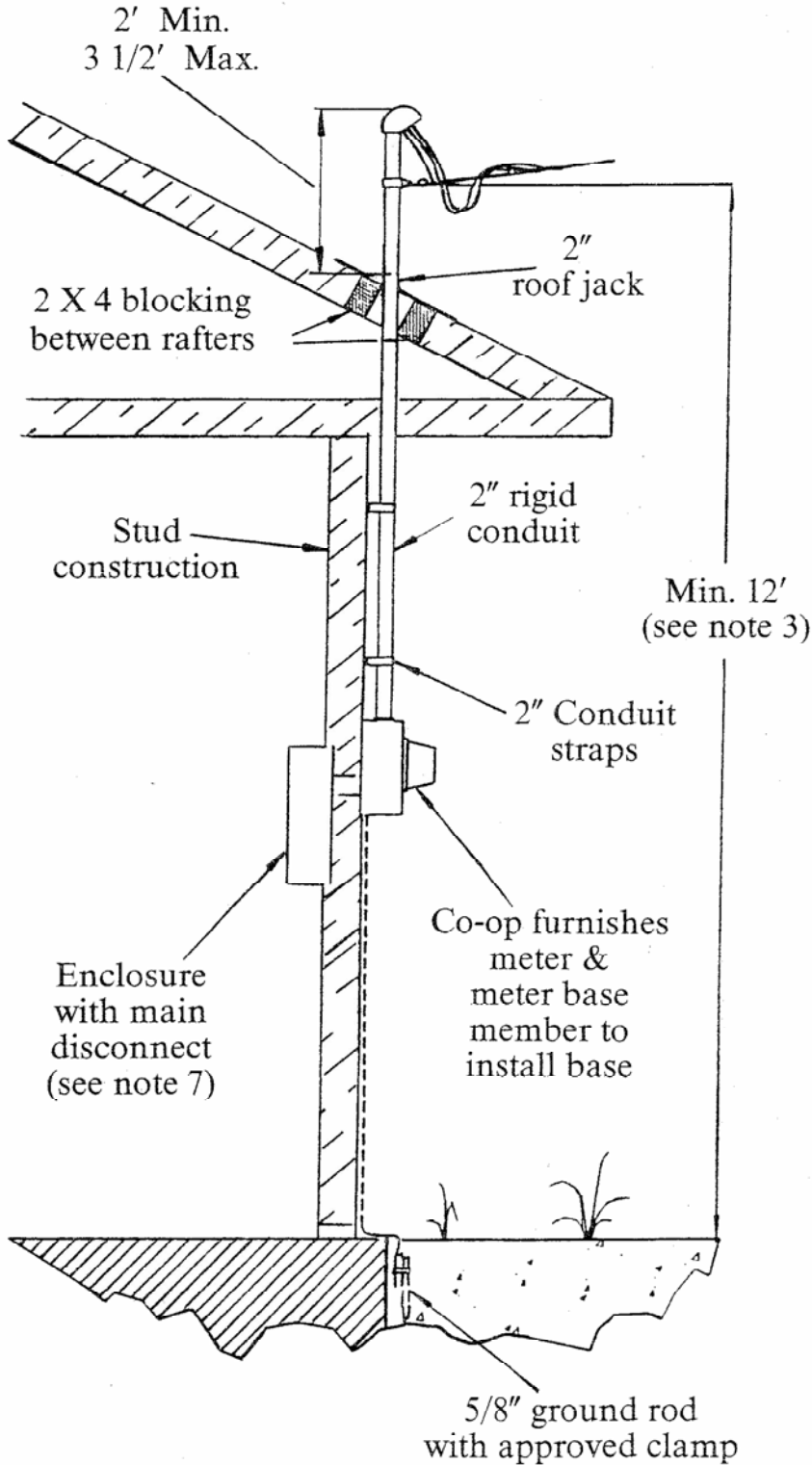


BOWIE-CASS ELECTRIC COOPERATIVE, INC.

TYPICAL MAST SERVICE INSTALLATION



BOWIE-CASS ELECTRIC COOPERATIVE, INC.

NOTES

1. All wiring shall be in accordance with Article 230 of the latest edition of the National Electric Code.
2. Minimum requirements only are shown on the attached standard and are not intended to conflict with local codes which may require more than the minimum required by the attached drawing.
3. Points of attachment for service must be of sufficient height to maintain:
 - 12 foot minimum clearance for pedestrians only.
 - 16 foot minimum clearance for residential driveways.
 - 18 foot minimum clearance for commercial driveways or parking lots.
 - 22 foot minimum clearance over public streets and roads.
4. Wire sizes shown on the attached drawing are minimum only and shall be sized according to load and main size as recommended by the latest edition of the National Electric Code.
5. Minimum Wire Size:
 - 200 AMP Main, Residential Load:
 - #2/0 copper THW with #4 solid copper ground wire
 - #4/0 aluminum with #4 solid copper ground wire
 - (copper and aluminum shall not be used in same lug)
 - 100 AMP Main, Residential Load:
 - #4 copper THW with #6 solid copper ground wire
 - #2 aluminum with #6 solid copper ground wire
 - (copper and aluminum shall not be used in same lug)
6. If aluminum wire is used, the wire shall be covered with an oxide inhibitor before it is inserted into terminal.
7. Main disconnect locations must meet clearance requirements as specified by Section 110-16 of the National Electric Code.
8. No more than six circuit breaker enclosures may be used without installing a main breaker.
9. All conduits shall have locknuts and bushings installed, and no open holes are allowed in meter base.
10. Ground rods must be 5/8" x 8' and shall be galvanized or copper coated with an approved ground wire clamp.